



## Employment Facts and Statistics

Office of Economic Opportunity  
 Veterans Benefits Administration  
 BLS Figures (non-seasonally adjusted)

### 2nd Quarter 2014

#### Unemployment

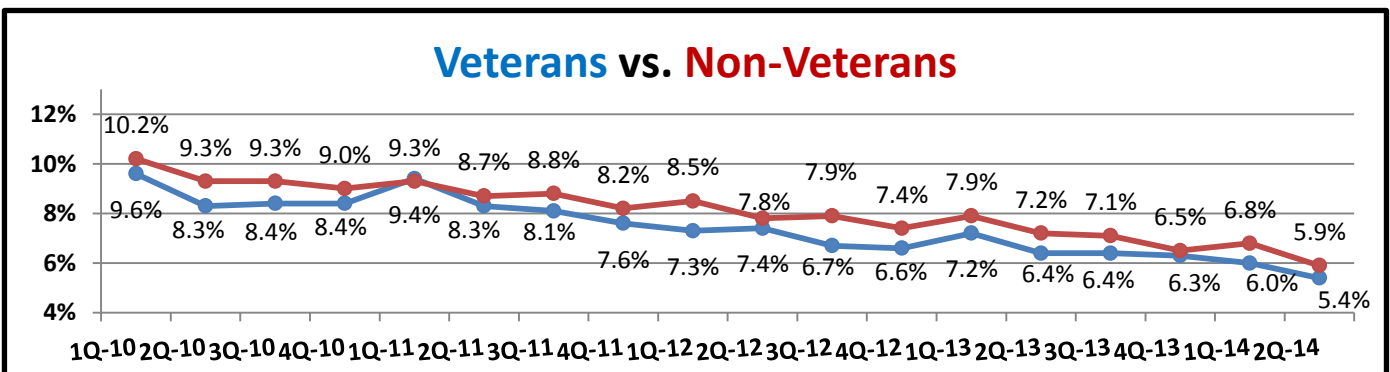
Cohort (% of total)	Rate	Change	Level	Change	Non-Vets
<b>All Veterans (100%)</b>	<b>5.4%</b>	<b>-0.6%</b>	<b>573,000</b>	<b>-71,000</b>	<b>5.9%</b>
Male	5.2%	-1.0%	485,000	-93,000	6.0%
Female	6.4%	1.8%	88,000	22,000	5.7%
<b>Post-9/11 Veterans (27%)</b>	<b>6.4%</b>	<b>-1.6%</b>	<b>156,000</b>	<b>-39,000</b>	-
Male	6.0%	-2.1%	122,000	-43,000	-
Female	8.5%	1.2%	34,000	4,000	-
<b>18-24 Veterans (2%)</b>	<b>12.5%</b>	<b>-1.9%</b>	<b>14,000</b>	<b>-7,000</b>	<b>12.3%</b>
Male	12.4%	-1.4%	12,000	-2,000	13.3%
Female*	12.7%	-3.3%	2,000	-5,000	11.2%
<b>25-34 Veterans (16%)</b>	<b>6.4%</b>	<b>-2.4%</b>	<b>90,000</b>	<b>-33,000</b>	<b>6.3%</b>
Male	6.0%	-3.2%	70,000	-37,000	6.5%
Female	8.6%	1.9%	20,000	4,000	6.2%
<b>35-44 Veterans (20%)</b>	<b>5.3%</b>	<b>-0.2%</b>	<b>114,000</b>	<b>-4,000</b>	<b>4.6%</b>
Male	4.6%	-0.9%	79,000	-15,000	4.5%
Female	8.4%	2.7%	35,000	12,000	4.7%
<b>45-54 Veterans (23%)</b>	<b>4.8%</b>	<b>-1.2%</b>	<b>131,000</b>	<b>-35,000</b>	<b>4.2%</b>
Male	5.1%	-1.5%	119,000	-37,000	4.0%
Female	3.1%	0.6%	12,000	2,000	4.4%
<b>55+ Veterans (39%)</b>	<b>5.2%</b>	<b>0.3%</b>	<b>225,000</b>	<b>8,000</b>	<b>4.2%</b>
Male	5.2%	0.1%	206,000	-1,000	4.3%
Female	5.8%	2.9%	19,000	9,000	4.1%

\* Does not meet BLS publication criteria  
 - 35,000 (10%) of all 18-54 Veterans (349,000) are enrolled in school either part time or full time

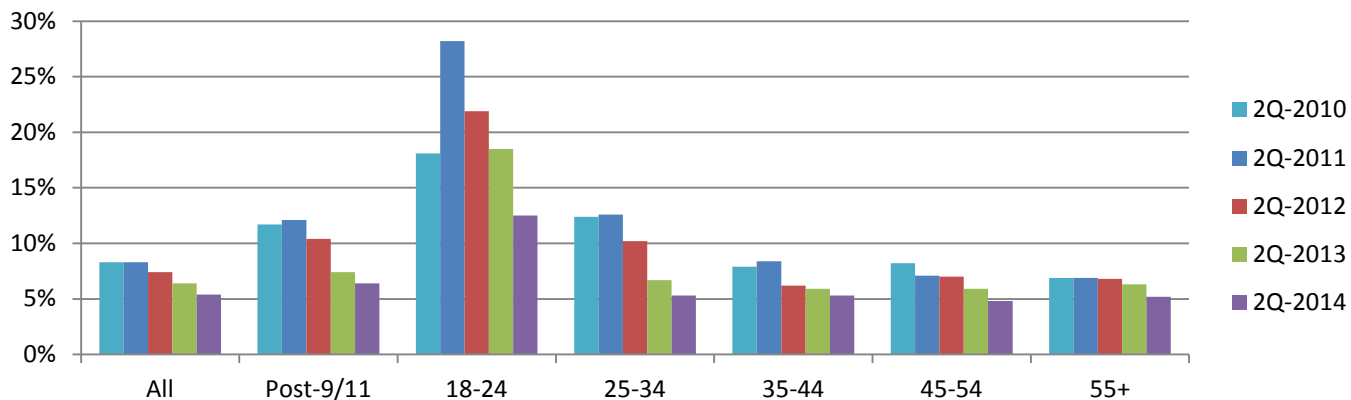
#### Unemployment by State

Highest Levels (29% of total)	Level	Highest Rates	Rate
California	65,000	Maryland	11.7%
Florida	51,000	Maine*	8.1%
Texas	40,000	North Carolina	8.0%
Georgia	38,000	Oregon	8.0%
North Carolina	28,000	New York	7.9%

\* Does not meet BLS publication criteria



## Year-Over-Year Comparison Veteran Unemployment

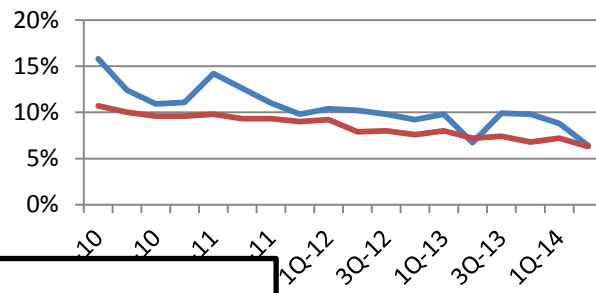
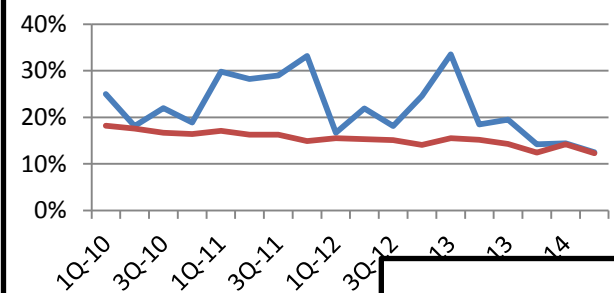


Vets/Non-Vets

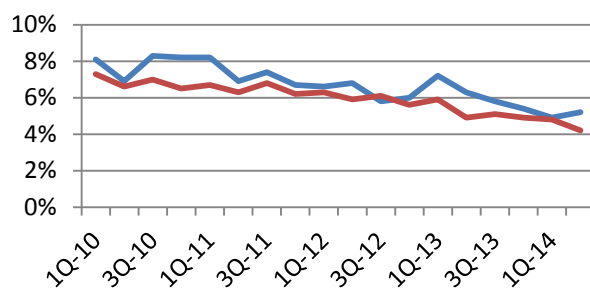
Vets/Non-Vets

### 18-24

### 25-34



### 55+



### 35-44

### 45-54

