



Employment Facts and Statistics

Office of Economic Opportunity
 Veterans Benefits Administration
 BLS Figures (non-seasonally adjusted)

August-14

Unemployment

Cohort (% of total)	Rate	Change	Level	Change	Non-Vets
National	6.1%	-0.1%	9.6M	-100,000	-
>27 Weeks			3.0M	-192,000	-
All Veterans (100%)	5.6%	-0.4%	598,000	-40,000	6.1%
Male	5.5%	-0.4%	516,000	-25,000	5.8%
Female	6.0%	-1.0%	82,000	-15,000	6.4%
Post-9/11 Veterans (34%)	8.1%	-1.1%	201,000	-27,000	-
Male	8.2%	-0.6%	165,000	-13,000	-
Female	7.6%	-3.1%	36,000	-14,000	-
18-24 Veterans (3%)	14.2%	-17.9%	19,000	-25,000	12.0%
Male	19.5%	-17.8%	19,000	-19,000	12.6%
Female*	-	0.0%	-	0	11.3%
25-34 Veterans (22%)	9.6%	0.6%	131,000	9,000	6.8%
Male	9.3%	0.7%	108,000	10,000	6.0%
Female	10.9%	-0.3%	22,000	-2,000	7.6%
35-44 Veterans (17%)	4.9%	-1.3%	101,000	-32,000	4.7%
Male	4.8%	-1.4%	80,000	-25,000	4.6%
Female	5.2%	-1.2%	21,000	-7,000	4.9%
45-54 Veterans (20%)	4.3%	0.3%	121,000	11,000	4.3%
Male	4.7%	0.6%	113,000	16,000	3.8%
Female	2.2%	-1.1%	9,000	-4,000	4.8%
55+ Veterans (38%)	5.3%	-0.2%	225,000	-5,000	4.6%
Male	4.9%	-0.3%	196,000	-7,000	4.0%
Female	9.3%	0.7%	29,000	3,000	5.1%

* Does not meet BLS publication criteria

- 27,000 (7.2%) of all 18-54 Veterans (373,000) are enrolled in school either part time or full time

Unemployed by State Data

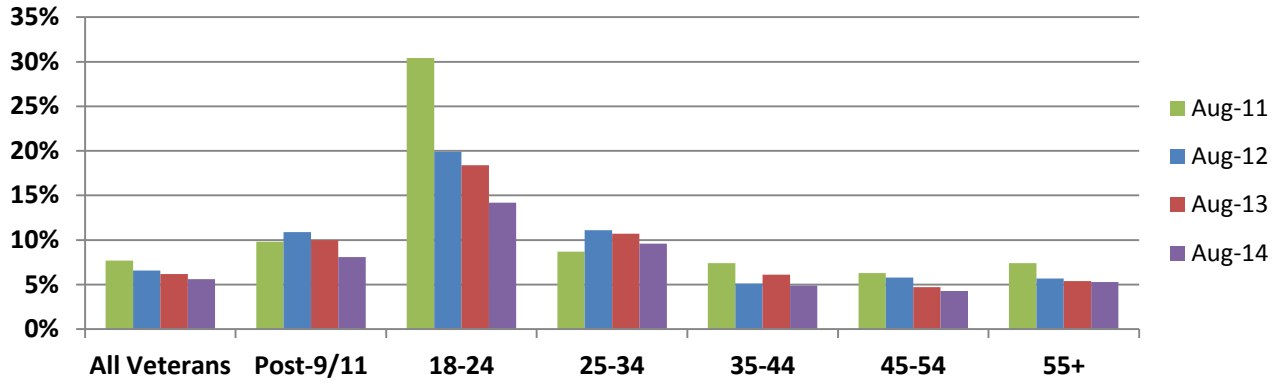
Highest Levels (39% of total)	Level	Highest Rates	Rate
Texas	73,000	New York	11.1%
California	61,000	Maryland	10.8%
Florida	52,000	Arkansas	9.6%
New York	43,000	Nevada	9.5%
Georgia	29,000	Oregon	9.1%

*Does not meet BLS Publication Criteria

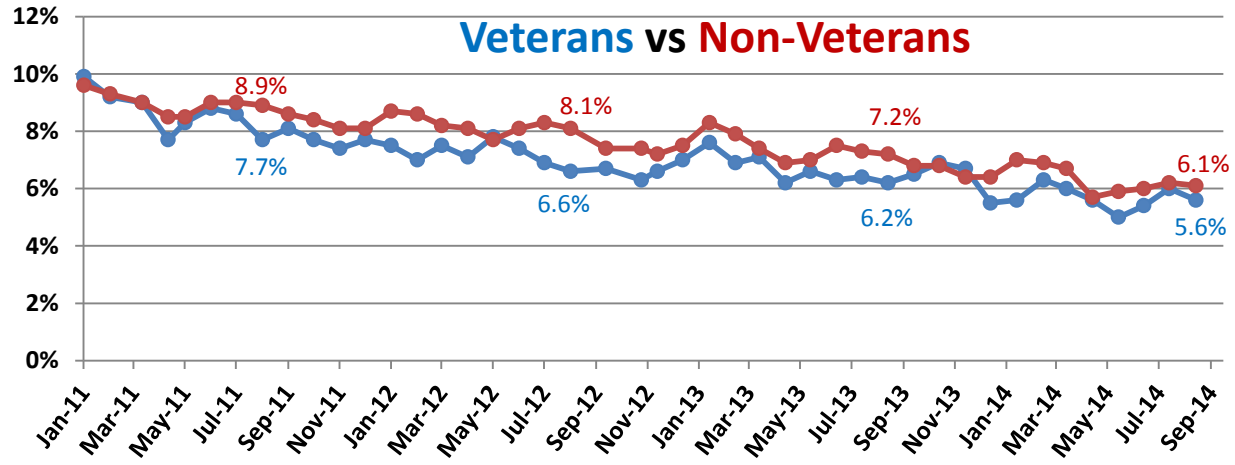
Employment Sectors

Sector	+/-	Sector	+/-
Professional/Business	47,000	Transportation/Warehousing	Even
Healthcare	34,000	Government	Even
Construction	20,000	Financial	Even
Manufacturing	Even	Wholesale Trade	Even
Mining	Even	Retail	8,000

Year-Over-Year Comparison



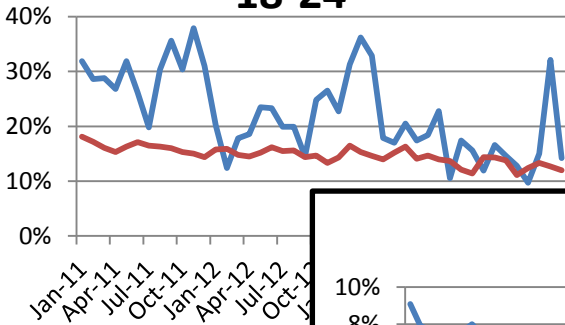
Veterans vs Non-Veterans



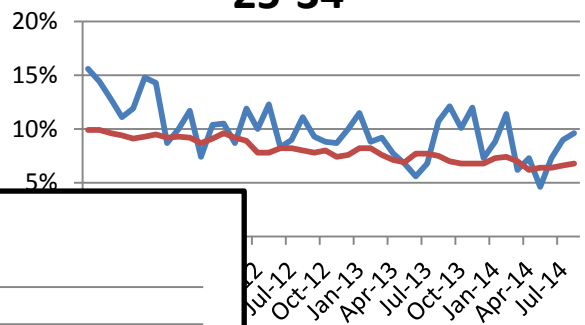
Vets / Non-Vets

Vets / Non-Vets

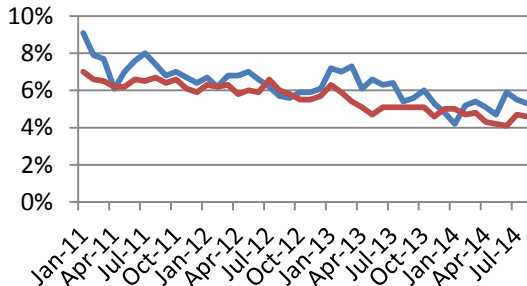
18-24



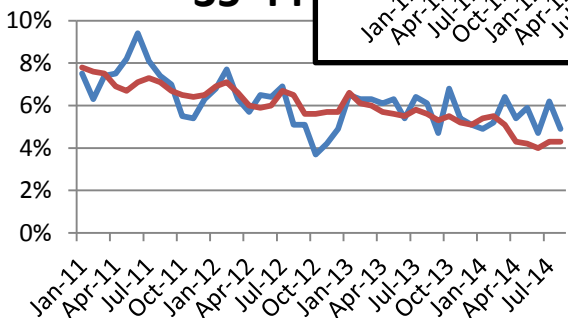
25-34



55+



35-44



45-54

