



## Employment Facts and Statistics

Office of Economic Opportunity  
 Veterans Benefits Administration  
 BLS Figures (non-seasonally adjusted)

### February-15

#### Unemployment

Cohort (% of total)	Rate	Change	Level	Change	Non-Vets
<b>National</b>	<b>5.5%</b>	<b>-0.2%</b>	<b>8.7M</b>	<b>-300,000</b>	-
>27 Weeks			2.7M	-100,000	-
<b>All Veterans (100%)</b>	<b>5.3%</b>	<b>0.0%</b>	<b>578,000</b>	<b>8,000</b>	<b>5.7%</b>
Male	5.2%	0.1%	502,000	13,000	6.3%
Female	5.7%	-0.5%	76,000	-4,000	5.2%
<b>Post-9/11 Veterans (33%)</b>	<b>6.7%</b>	<b>-1.2%</b>	<b>190,000</b>	<b>-29,000</b>	-
Male	7.2%	-1.1%	174,000	-17,000	-
Female	4.0%	-2.2%	17,000	-10,000	-
<b>18-24 Veterans (7%)</b>	<b>18.7%</b>	<b>2.9%</b>	<b>41,000</b>	<b>7,000</b>	<b>11.6%</b>
Male	20.6%	2.7%	37,000	7,000	12.9%
Female*	-	0.0%	4,000	0	10.2%
<b>25-34 Veterans (19%)</b>	<b>7.4%</b>	<b>-0.9%</b>	<b>109,000</b>	<b>-10,000</b>	<b>5.7%</b>
Male	7.5%	-1.4%	94,000	-13,000	6.3%
Female	6.7%	1.4%	16,000	5,000	5.1%
<b>35-44 Veterans (15%)</b>	<b>4.1%</b>	<b>-0.7%</b>	<b>86,000</b>	<b>-12,000</b>	<b>4.9%</b>
Male	3.6%	-0.9%	63,000	-13,000	5.1%
Female	6.8%	0.1%	23,000	1,000	4.7%
<b>45-54 Veterans (22%)</b>	<b>4.6%</b>	<b>0.6%</b>	<b>129,000</b>	<b>18,000</b>	<b>4.2%</b>
Male	4.7%	1.1%	113,000	25,000	4.5%
Female	4.1%	-2.7%	16,000	-7,000	3.9%
<b>55+ Veterans (37%)</b>	<b>4.9%</b>	<b>0.1%</b>	<b>212,000</b>	<b>4,000</b>	<b>4.5%</b>
Male	4.9%	0.2%	196,000	7,000	5.0%
Female	5.6%	0.2%	18,000	-1,000	4.0%

\* Does not meet BLS publication criteria

- 44,000 (12%) of all 18-54 Veterans (362,000) are enrolled in school either part time or full time

#### Unemployed by State Data

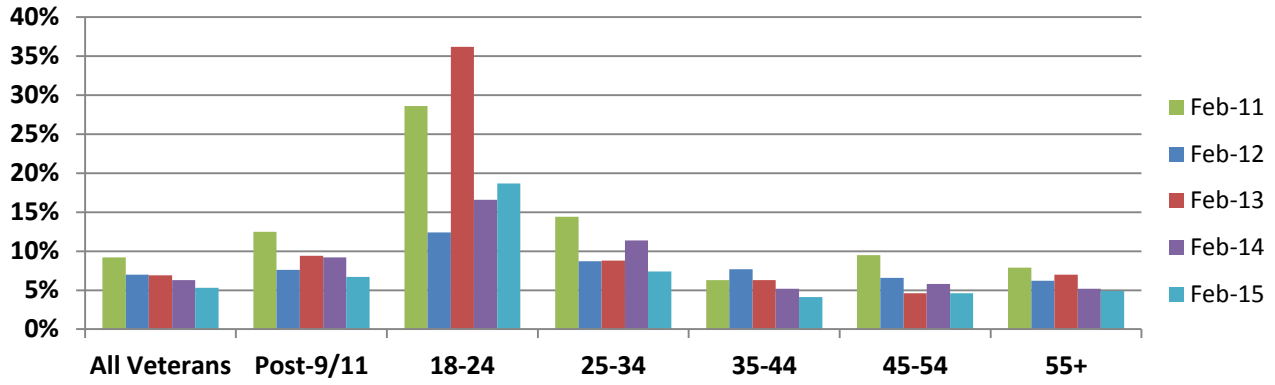
Highest Levels (37% of total)	Level	Highest Rates	Rate
California	67,000	Massachusetts	15.6%
Florida	64,000	Washington, DC*	12.3%
Georgia	29,000	New Hampshire*	11.3%
Illinois	29,000	New Mexico	10.5%
New York	29,000	New Jersey	9.1%

\* Does not meet BLS publication criteria

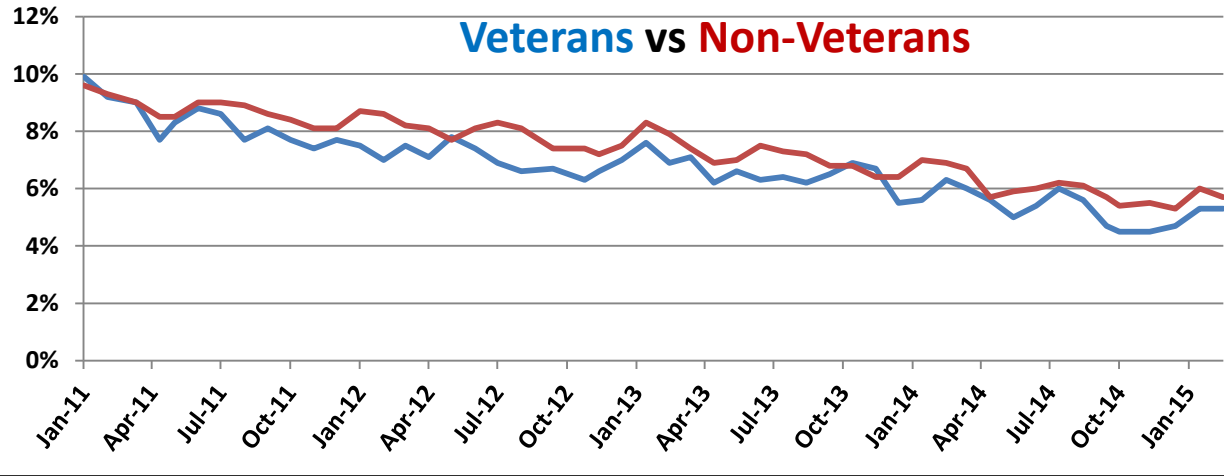
#### Employment Sectors

Sector	+/-	Sector	+/-
Food Services & Drinking Est.	59,000	Transportation/Warehousing	19,000
Professional/Business	51,000	Manufacturing	8,000
Retail	32,000	Financial	Even
Construction	29,000	Government	Even
Healthcare	24,000	Wholesale Trade	Even

## Year-Over-Year Comparison



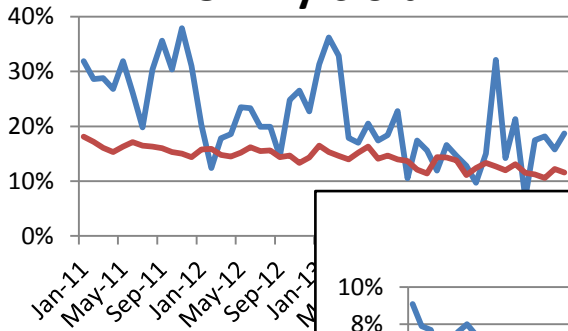
## Veterans vs Non-Veterans



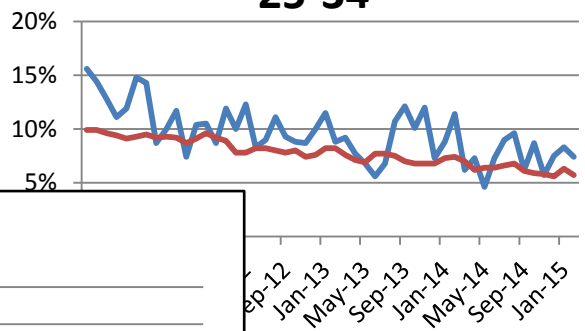
Vets / Non-Vets

Vets / Non-Vets

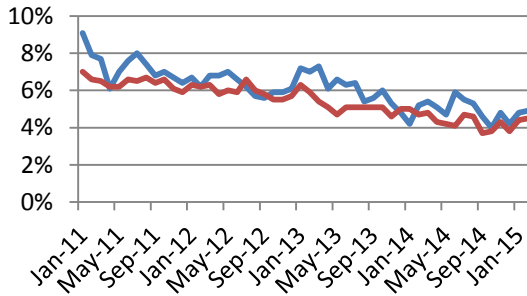
### 18-24 yrs old



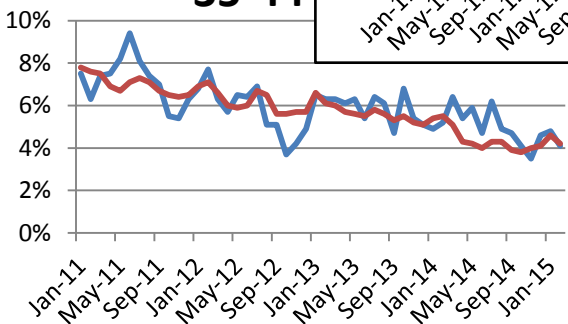
### 25-34



### 55+



### 35-44



### 45-54

