



## Employment Facts and Statistics

Office of Economic Opportunity  
 Veterans Benefits Administration  
 BLS Figures (non-seasonally adjusted)

### May-15

#### Unemployment

Cohort (% of total)	Rate	Change	Level	Change	Non-Vets
<b>National</b>	<b>5.5%</b>	<b>0.1%</b>	<b>8.7M</b>	<b>200,000</b>	-
>27 Weeks			2.5M	-	-
<b>All Veterans (100%)</b>	<b>5.0%</b>	<b>0.3%</b>	<b>541,000</b>	<b>34,000</b>	<b>5.1%</b>
Male	4.8%	0.1%	460,000	10,000	5.2%
Female	6.4%	1.8%	81,000	24,000	5.0%
<b>Post-9/11 Veterans (30%)</b>	<b>5.4%</b>	<b>-1.5%</b>	<b>160,000</b>	<b>-41,000</b>	-
Male	5.3%	-1.6%	132,000	-39,000	-
Female	6.3%	-0.7%	28,000	-2,000	-
<b>18-24 Veterans (5%)</b>	<b>14.1%</b>	<b>-1.7%</b>	<b>27,000</b>	<b>-7,000</b>	<b>11.5%</b>
Male	14.8%	-1.6%	22,000	-7,000	12.6%
Female*	11.8%	-0.5%	5,000	1,000	10.4%
<b>25-34 Veterans (19%)</b>	<b>6.8%</b>	<b>-0.2%</b>	<b>103,000</b>	<b>1,000</b>	<b>5.4%</b>
Male	6.1%	-1.0%	77,000	-9,000	5.4%
Female	10.8%	4.1%	25,000	10,000	5.5%
<b>35-44 Veterans (20%)</b>	<b>5.3%</b>	<b>1.0%</b>	<b>108,000</b>	<b>20,000</b>	<b>4.1%</b>
Male	4.6%	0.6%	78,000	9,000	4.0%
Female	9.2%	3.2%	29,000	10,000	4.2%
<b>45-54 Veterans (17%)</b>	<b>3.4%</b>	<b>-0.5%</b>	<b>93,000</b>	<b>-15,000</b>	<b>3.7%</b>
Male	3.4%	-0.5%	81,000	-13,000	3.5%
Female	3.4%	-0.2%	12,000	-2,000	3.8%
<b>55+ Veterans (39%)</b>	<b>4.9%</b>	<b>0.8%</b>	<b>210,000</b>	<b>35,000</b>	<b>3.3%</b>
Male	5.0%	0.7%	201,000	30,000	3.3%
Female	2.9%	1.4%	9,000	5,000	3.3%

\* Does not meet BLS publication criteria

- 23,000 (7%) of all 18-54 Veterans (331,000) are enrolled in school either part time or full time

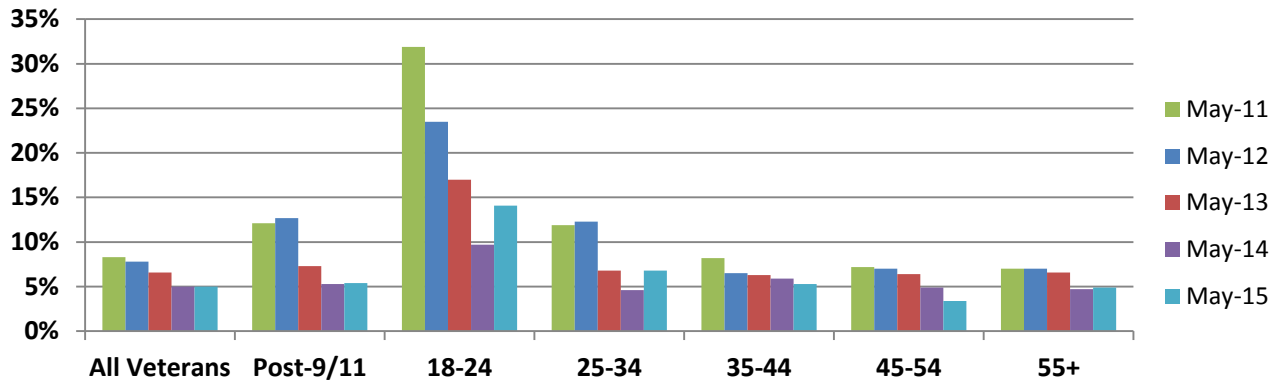
#### Unemployed by State Data

Highest Levels (36% of total)	Level	Highest Rates	Rate
California	70,000	New Mexico	9.6%
Texas	52,000	Pennsylvania	9.2%
Pennsylvania	37,000	Oregon	9.0%
Georgia	32,000	Georgia	8.8%
Florida	32,000	Alabama	8.2%

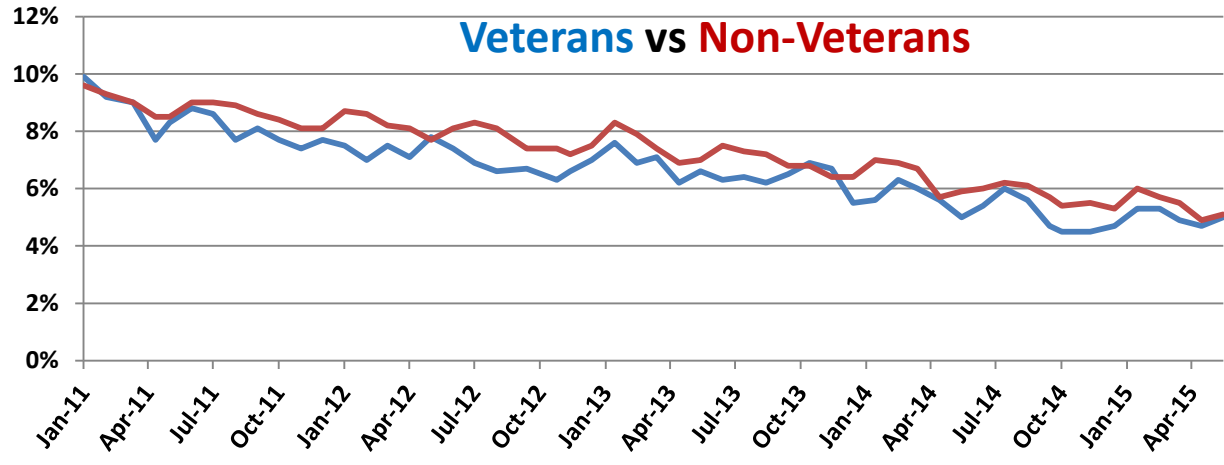
#### Employment Sectors

Sector	+/-	Sector	+/-
Professional/Business	63,000	Transportation/Warehousing	13,000
Leisure & Hospitality	57,000	Financial	13,000
Healthcare	47,000	Manufacturing	Even
Retail	31,000	Government	Even
Construction	17,000	Wholesale Trade	Even

## Year-Over-Year Comparison



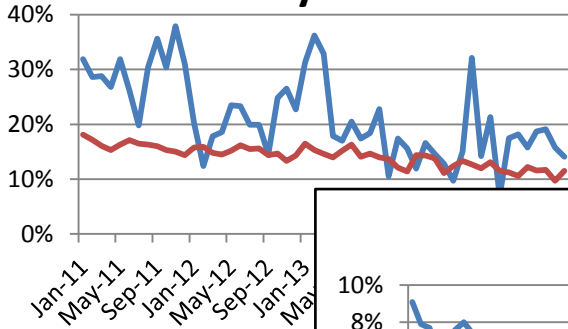
## Veterans vs Non-Veterans



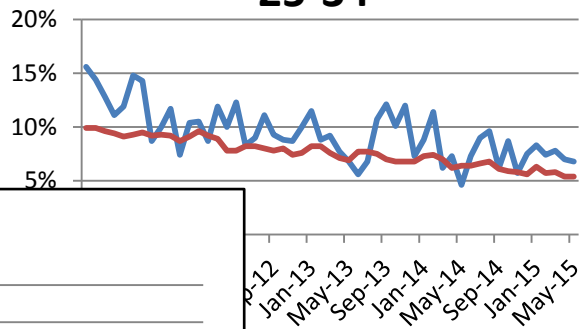
Vets / Non-Vets

Vets / Non-Vets

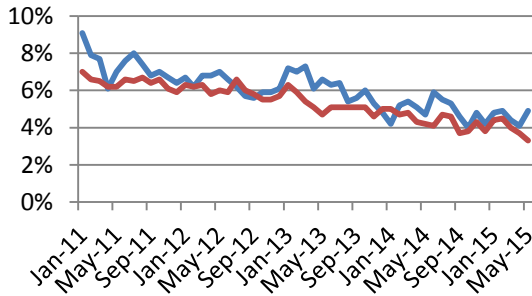
### 18-24 yrs old



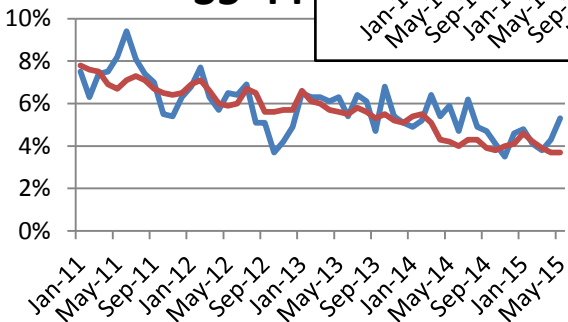
### 25-34



### 55+



### 35-44



### 45-54

