



## Employment Facts and Statistics

Office of Economic Opportunity  
 Veterans Benefits Administration  
 BLS Figures (non-seasonally adjusted)

### June-15

#### Unemployment

Cohort (% of total)	Rate	Change	Level	Change	Non-Vets
<b>National</b>	<b>5.3%</b>	<b>-0.2%</b>	<b>8.3M</b>	<b>-400,000</b>	-
>27 Weeks			2.1M	-400,000	-
<b>All Veterans (100%)</b>	<b>4.4%</b>	<b>-0.6%</b>	<b>459,000</b>	<b>-82,000</b>	<b>5.2%</b>
Male	4.1%	-0.7%	382,000	-78,000	5.2%
Female	6.8%	0.4%	77,000	-4,000	5.2%
<b>Post-9/11 Veterans (33%)</b>	<b>5.4%</b>	<b>0.0%</b>	<b>151,000</b>	<b>-9,000</b>	-
Male	4.5%	-0.8%	107,000	-25,000	-
Female	11.4%	5.1%	44,000	16,000	-
<b>18-24 Veterans (5%)</b>	<b>13.5%</b>	<b>-0.6%</b>	<b>25,000</b>	<b>-2,000</b>	<b>12.5%</b>
Male	14.6%	-0.2%	20,000	-2,000	13.7%
Female*	10.5%	-1.3%	5,000	0	11.2%
<b>25-34 Veterans (22%)</b>	<b>7.1%</b>	<b>0.3%</b>	<b>101,000</b>	<b>-2,000</b>	<b>5.5%</b>
Male	5.6%	-0.5%	69,000	-8,000	5.0%
Female	16.5%	5.7%	32,000	7,000	6.0%
<b>35-44 Veterans (20%)</b>	<b>4.6%</b>	<b>-0.7%</b>	<b>90,000</b>	<b>-18,000</b>	<b>3.7%</b>
Male	4.1%	-0.5%	69,000	-9,000	3.7%
Female	7.0%	-2.2%	21,000	-8,000	3.7%
<b>45-54 Veterans (11%)</b>	<b>1.9%</b>	<b>-1.5%</b>	<b>52,000</b>	<b>-41,000</b>	<b>3.4%</b>
Male	2.1%	-1.3%	50,000	-31,000	3.2%
Female	0.6%	-2.8%	2,000	-10,000	3.7%
<b>55+ Veterans (42%)</b>	<b>4.5%</b>	<b>-0.4%</b>	<b>191,000</b>	<b>-19,000</b>	<b>3.5%</b>
Male	4.4%	-0.6%	174,000	-27,000	3.3%
Female	6.5%	3.6%	17,000	8,000	3.6%

\* Does not meet BLS publication criteria

- 28,000 (10.4%) of all 18-54 Veterans (268,000) are enrolled in school either part time or full time

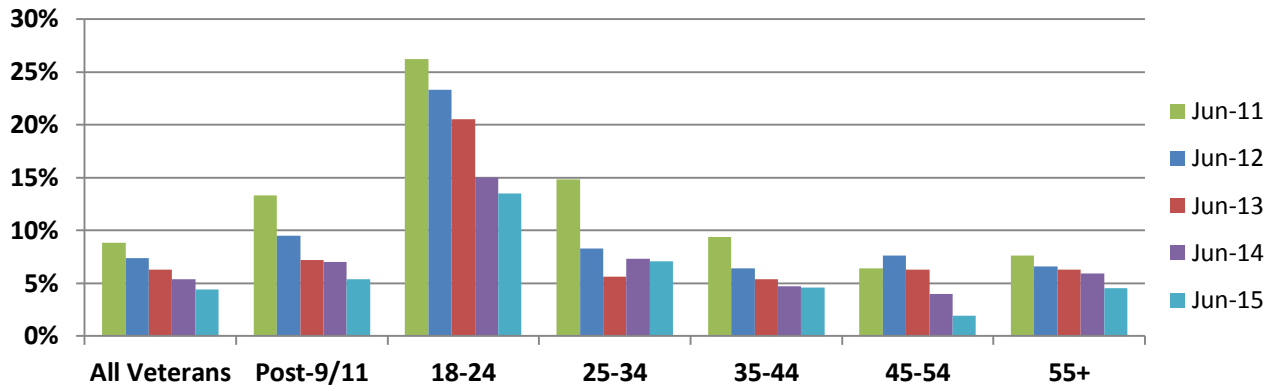
#### Unemployed by State Data

Highest Levels (36% of total)	Level	Highest Rates	Rate
Texas	63,000	Kentucky	15.2%
Florida	44,000	South Carolina	13.4%
South Carolina	27,000	Nevada	8.2%
Virginia	26,000	Pennsylvania	7.7%
North Carolina	24,000	Oregon	7.1%

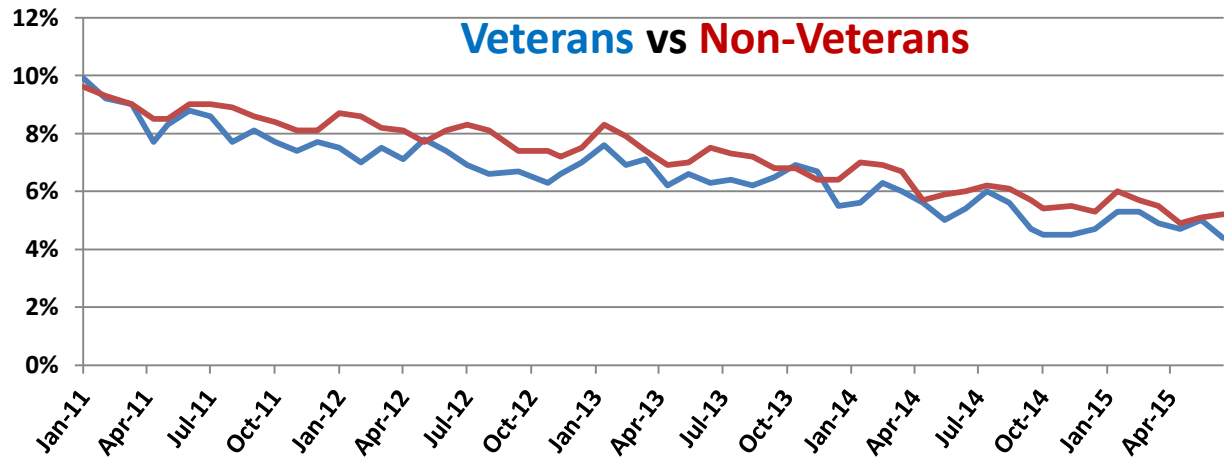
#### Employment Sectors

Sector	+/-	Sector	+/-
Professional/Business	64,000	Transportation/Warehousing	17,000
Healthcare	40,000	Construction	Even
Retail	33,000	Manufacturing	Even
Leisure & Hospitality	30,000	Government	Even
Financial	20,000	Wholesale Trade	Even

## Year-Over-Year Comparison



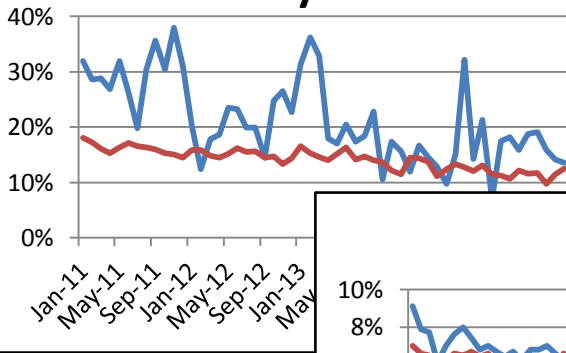
## Veterans vs Non-Veterans



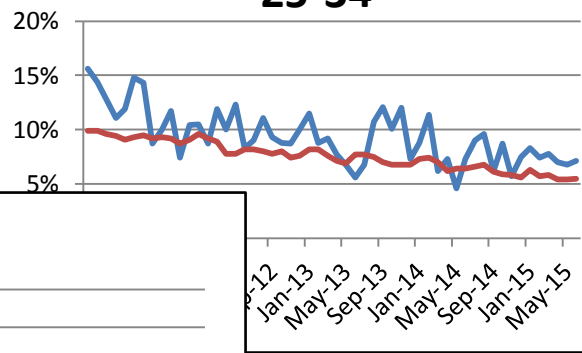
Vets / Non-Vets

Vets / Non-Vets

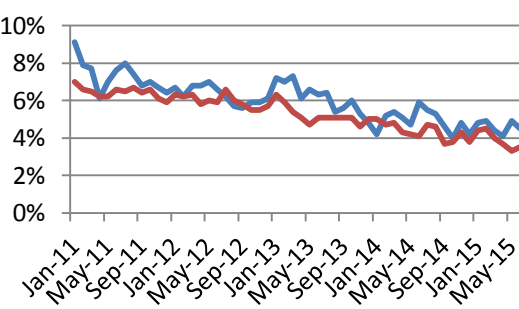
### 18-24 yrs old



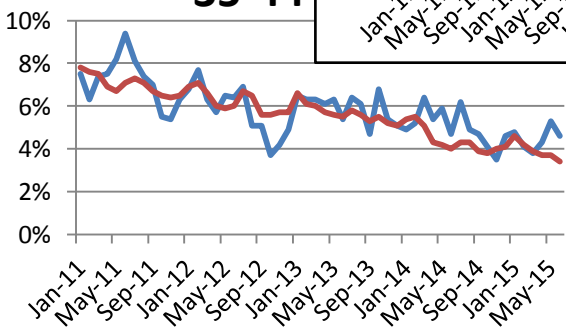
### 25-34



### 55+



### 35-44



### 45-54

