



## Employment Facts and Statistics

Office of Economic Opportunity  
 Veterans Benefits Administration  
 BLS Figures (non-seasonally adjusted)

### September-15

#### Unemployment

Cohort (% of total)	Rate	Change	Level	Change	Non-Vets
<b>National</b>	<b>5.1%</b>	0.0%	<b>7.9M</b>	<b>-100,000</b>	-
>27 Weeks			2.1M	-100,000	-
<b>All Veterans (100%)</b>	<b>4.3%</b>	<b>0.1%</b>	<b>469,000</b>	<b>20,000</b>	<b>4.8%</b>
Male	4.1%	0.0%	396,000	11,000	4.7%
Female	5.9%	0.7%	73,000	9,000	4.8%
<b>Post-9/11 Veterans (31%)</b>	<b>5.0%</b>	<b>0.3%</b>	<b>147,000</b>	<b>13,000</b>	-
Male	5.0%	0.4%	122,000	10,000	-
Female	5.0%	0.0%	25,000	3,000	-
<b>18-24 Veterans (6%)</b>	<b>14.1%</b>	<b>4.9%</b>	<b>28,000</b>	<b>10,000</b>	<b>10.5%</b>
Male	17.8%	7.9%	28,000	13,000	11.2%
Female*	-	-	-	-	9.7%
<b>25-34 Veterans (19%)</b>	<b>6.1%</b>	<b>-0.5%</b>	<b>89,000</b>	<b>-6,000</b>	<b>4.9%</b>
Male	5.9%	-0.7%	72,000	-8,000	4.7%
Female	6.9%	0.1%	17,000	2,000	5.1%
<b>35-44 Veterans (13%)</b>	<b>3.1%</b>	<b>0.8%</b>	<b>63,000</b>	<b>17,000</b>	<b>3.9%</b>
Male	2.4%	0.8%	41,000	13,000	3.5%
Female	7.0%	1.3%	22,000	4,000	4.4%
<b>45-54 Veterans (17%)</b>	<b>2.8%</b>	<b>-0.9%</b>	<b>80,000</b>	<b>-24,000</b>	<b>3.2%</b>
Male	3.0%	-0.7%	73,000	-17,000	3.0%
Female	1.8%	-1.9%	7,000	-7,000	3.4%
<b>55+ Veterans (45%)</b>	<b>4.9%</b>	<b>0.5%</b>	<b>209,000</b>	<b>22,000</b>	<b>3.6%</b>
Male	4.5%	0.1%	181,000	8,000	3.6%
Female	10.7%	5.5%	27,000	13,000	3.6%

\* Does not meet BLS publication criteria

- 9,000 (3%) of all 18-54 Veterans (260,000) are enrolled in school either part time or full time

#### Unemployed by State Data

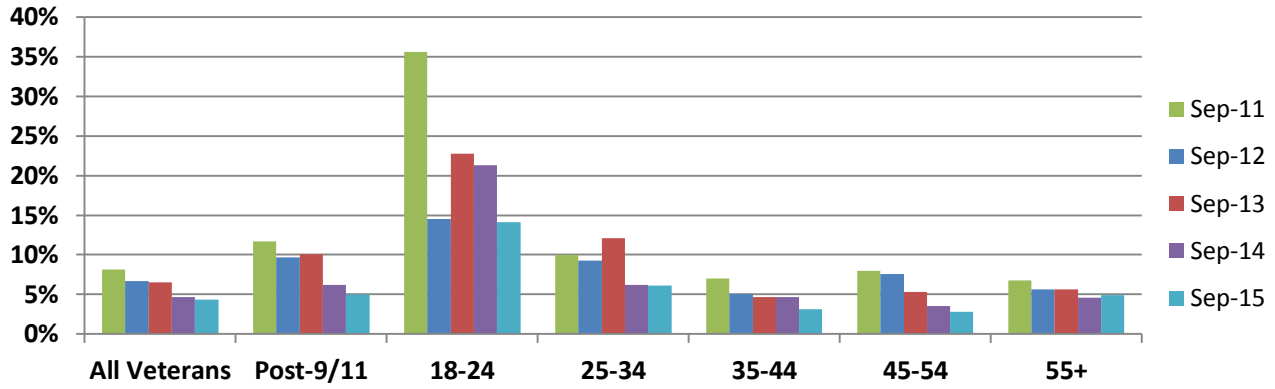
Highest Levels (40% of total)	Level	Highest Rates	Rate
California	55,000	Kentucky	9.0%
Florida	43,000	Nevada	8.5%
Texas	41,000	Washington, DC	*7.8%
New York	25,000	New Jersey	7.2%
Pennsylvania	25,000	West Virginia	7.0%

\* Does not meet BLS publication criteria

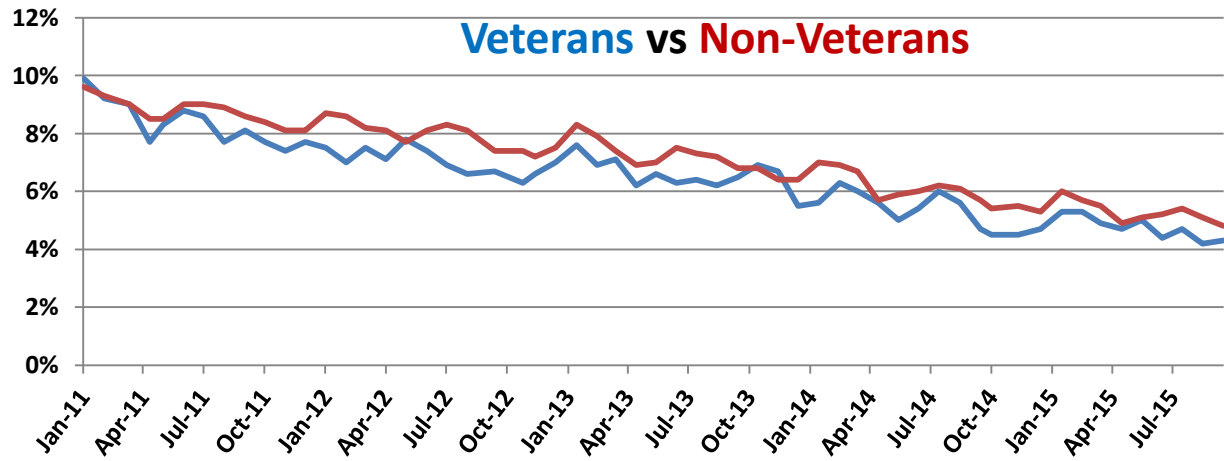
#### Employment Sectors

Sector	+/-	Sector	+/-
Healthcare	34,000	Wholesale Trade	Even
Professional/Business	31,000	Transportation/Warehousing	Even
Retail	24,000	Construction	Even
Leisure & Hospitality	21,000	Government	Even
Financial	Even	Manufacturing	Even

## Year-Over-Year Comparison



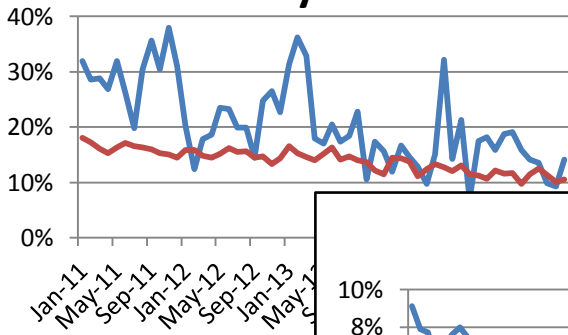
## Veterans vs Non-Veterans



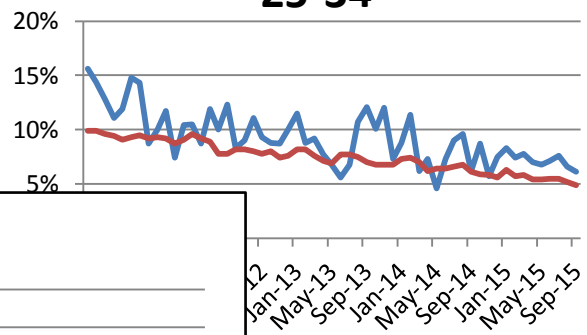
Vets / Non-Vets

Vets / Non-Vets

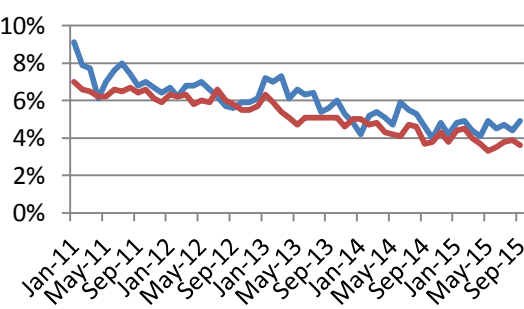
### 18-24 yrs old



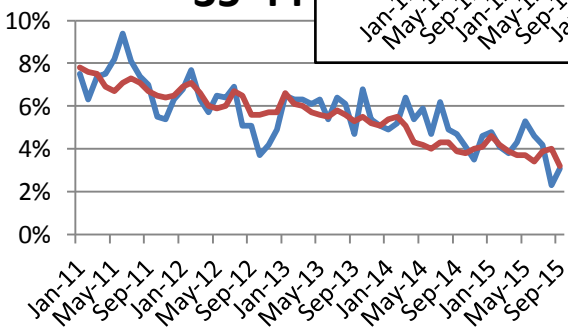
### 25-34



### 55+



### 35-44



### 45-54

