



## Employment Facts and Statistics

Office of Economic Opportunity  
 Veterans Benefits Administration  
 BLS Figures (non-seasonally adjusted)

### 4th Quarter 2015

#### Unemployment

Cohort (% of total)	Rate	Change	Level	Change	Non-Vets
<b>All Veterans (100%)</b>	<b>4.1%</b>	<b>-0.3%</b>	<b>442,000</b>	<b>-31,000</b>	<b>4.7%</b>
Male	4.1%	-0.2%	389,000	-19,000	4.9%
Female	4.3%	-1.1%	53,000	-12,000	4.6%
<b>Post-9/11 Veterans (33%)</b>	<b>4.9%</b>	<b>-0.5%</b>	<b>149,000</b>	<b>-8,000</b>	-
Male	4.5%	-0.9%	116,000	-16,000	-
Female	6.4%	0.8%	33,000	8,000	-
<b>18-24 Veterans (4%)</b>	<b>7.8%</b>	<b>-3.3%</b>	<b>15,000</b>	<b>-6,000</b>	<b>9.9%</b>
Male	7.4%	-5.2%	12,000	-6,000	11.1%
Female*	9.7%	3.8%	3,000	1,000	8.7%
<b>25-34 Veterans (21%)</b>	<b>6.2%</b>	<b>-0.6%</b>	<b>91,000</b>	<b>-6,000</b>	<b>5.2%</b>
Male	6.5%	-0.1%	80,000	0	5.3%
Female	4.5%	-3.1%	11,000	-6,000	5.1%
<b>35-44 Veterans (14%)</b>	<b>4.3%</b>	<b>1.1%</b>	<b>87,000</b>	<b>23,000</b>	<b>3.9%</b>
Male	4.1%	1.5%	70,000	26,000	3.6%
Female	5.1%	-1.4%	17,000	-4,000	4.1%
<b>45-54 Veterans (19%)</b>	<b>3.2%</b>	<b>-0.1%</b>	<b>86,000</b>	<b>-6,000</b>	<b>3.4%</b>
Male	3.1%	-0.3%	73,000	-12,000	3.4%
Female	3.9%	1.8%	13,000	5,000	3.5%
<b>55+ Veterans (42%)</b>	<b>3.7%</b>	<b>-1.0%</b>	<b>163,000</b>	<b>-35,000</b>	<b>3.3%</b>
Male	3.8%	-0.7%	154,000	-26,000	3.4%
Female	3.0%	-3.8%	10,000	-8,000	3.1%

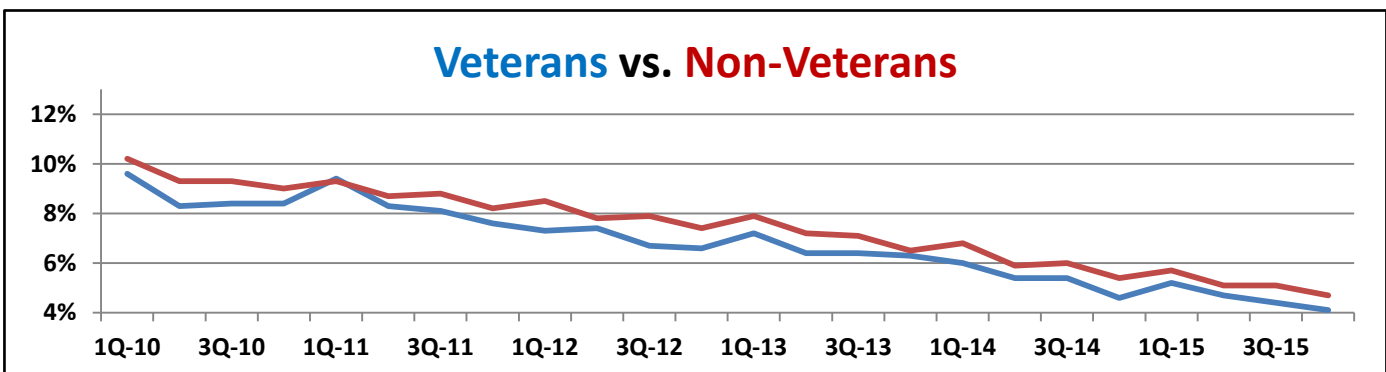
\* Does not meet BLS publication criteria

- 33,000 (12%) of all 18-54 Veterans (279,000) are enrolled in school either part time or full time

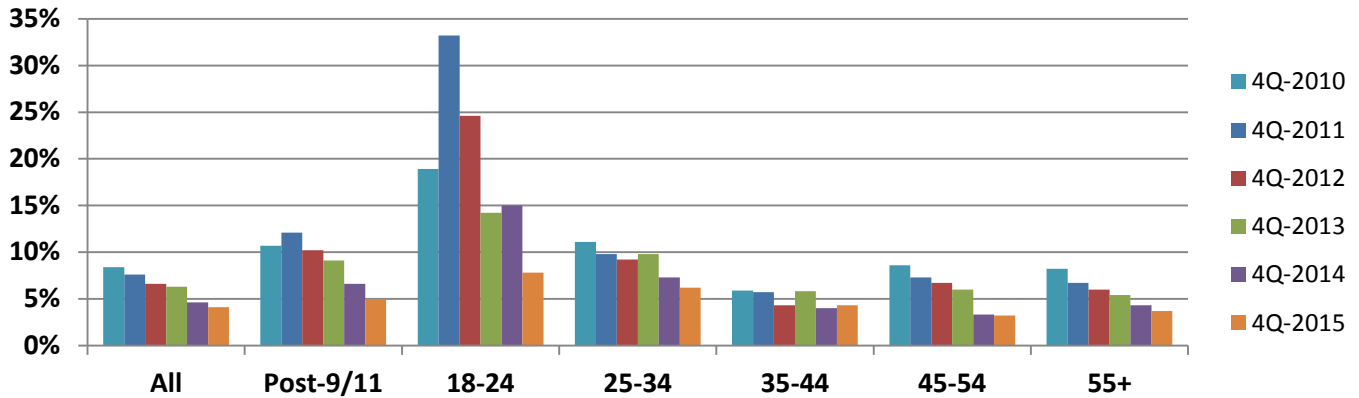
#### Unemployment by State

Highest Levels (42% of total)	Level	Highest Rates	Rate
California	49,000	Maryland	9.5%
Florida	43,000	Washington, DC	*8.2%
Texas	36,000	Minnesota	7.4%
Maryland	31,000	Rhode Island	6.3%
Illinois	19,000	California/Louisiana	6.1%

\* Does not meet BLS publication criteria



## Year-Over-Year Comparison Veteran Unemployment

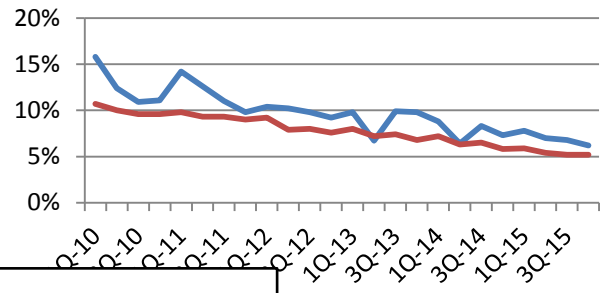
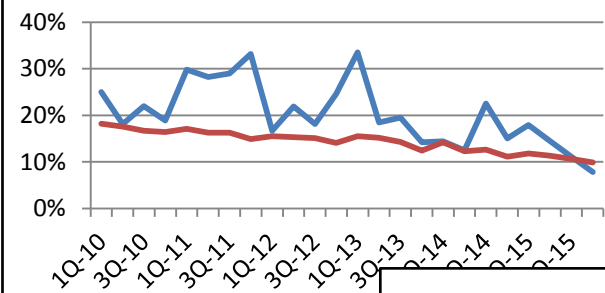


Vets/Non-Vets

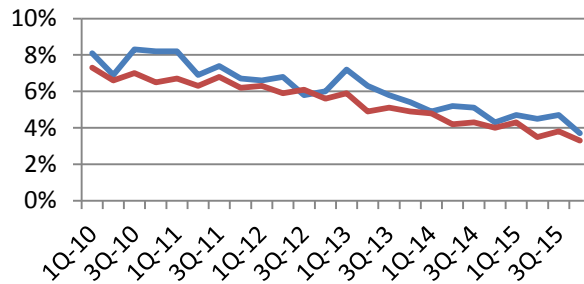
Vets/Non-Vets

### 18-24 yrs old

### 25-34



### 55+



### 35-44

### 45-54

