



## Employment Facts and Statistics

Office of Economic Opportunity  
 Veterans Benefits Administration  
 BLS Figures (non-seasonally adjusted)

### December-15

#### Unemployment

Cohort (% of total)	Rate	Change	Level	Change	Non-Vets
<b>National</b>	<b>5.0%</b>	0.0%	<b>7.9M</b>	0	-
>27 Weeks			2.1M	0	-
<b>All Veterans (100%)</b>	<b>4.8%</b>	<b>1.2%</b>	<b>514,000</b>	<b>123,000</b>	<b>4.7%</b>
Male	5.0%	1.5%	478,000	144,000	5.0%
Female	2.9%	-1.6%	36,000	-21,000	4.4%
<b>Post-9/11 Veterans (33%)</b>	<b>5.7%</b>	<b>1.5%</b>	<b>173,000</b>	<b>42,000</b>	-
Male	5.9%	2.3%	150,000	57,000	-
Female	4.6%	-2.6%	22,000	-16,000	-
<b>18-24 Veterans (2%)</b>	<b>6.0%</b>	<b>-1.0%</b>	<b>12,000</b>	<b>-2,000</b>	<b>9.7%</b>
Male	4.9%	-3.3%	8,000	-6,000	10.9%
Female*	10.3%	-	6,000	-	8.5%
<b>25-34 Veterans (21%)</b>	<b>7.5%</b>	<b>2.2%</b>	<b>109,000</b>	<b>30,000</b>	<b>5.0%</b>
Male	8.9%	3.7%	109,000	45,000	5.4%
Female	0.3%	-5.6%	1,000	-14,000	4.7%
<b>35-44 Veterans (23%)</b>	<b>6.0%</b>	<b>3.1%</b>	<b>120,000</b>	<b>61,000</b>	<b>3.9%</b>
Male	6.5%	4.0%	110,000	67,000	3.8%
Female	3.2%	-1.9%	10,000	-6,000	4.0%
<b>45-54 Veterans (21%)</b>	<b>4.0%</b>	<b>1.1%</b>	<b>108,000</b>	<b>31,000</b>	<b>3.6%</b>
Male	4.0%	1.4%	96,000	36,000	3.6%
Female	3.7%	-1.6%	12,000	-5,000	3.6%
<b>55+ Veterans (33%)</b>	<b>3.8%</b>	<b>0.1%</b>	<b>164,000</b>	<b>2,000</b>	<b>3.0%</b>
Male	3.9%	0.1%	155,000	1,000	3.4%
Female	2.7%	0.2%	9,000	1,000	2.6%

\* Does not meet BLS publication criteria

- 43,000 (12%) of all 18-54 Veterans (349,000) are enrolled in school either part time or full time

#### Unemployed by State Data

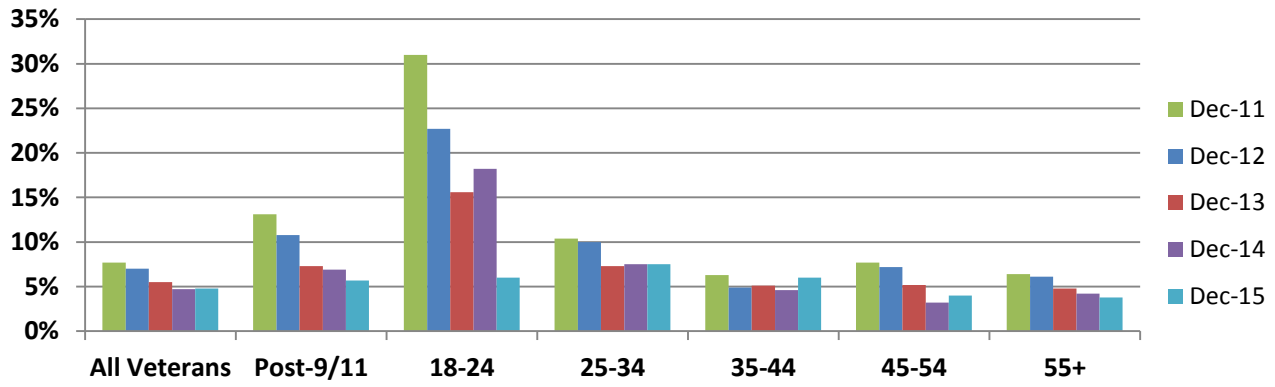
Highest Levels (39% of total)	Level	Highest Rates	Rate
California	60,000	Minnesota	12.1%
Florida	45,000	Connecticut	9.1%
Texas	42,000	Washington	8.4%
Maryland/Minnesota	27,000	Mississippi	8.3%
Georgia/Illinois	26,000	Maryland	8.2%

\* Does not meet BLS publication criteria

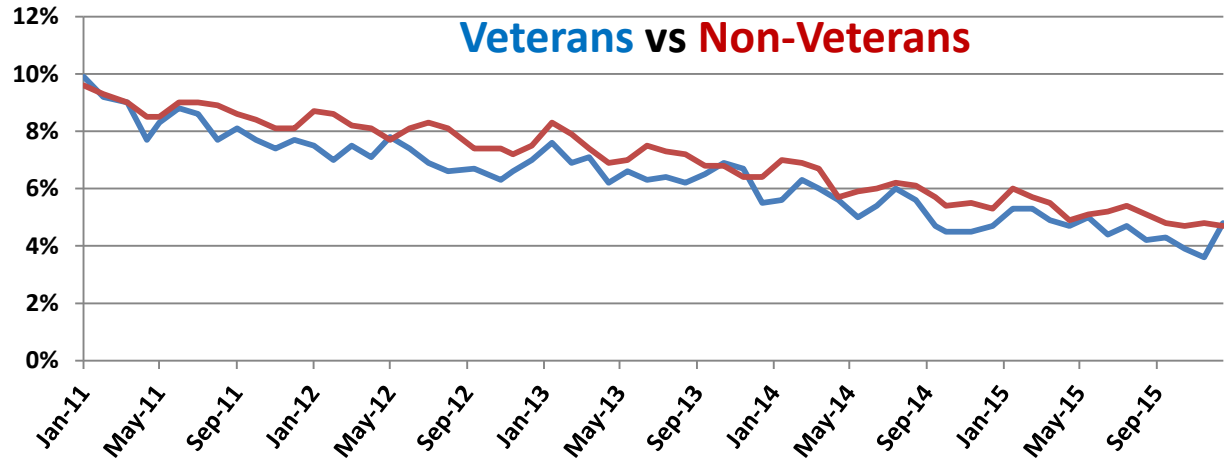
#### Employment Sectors

Sector	+/-	Sector	+/-
Professional/Business	73,000	Manufacturing	14,000
Construction	45,000	Wholesale Trade	Even
Healthcare	39,000	Financial	Even
Leisure & Hospitality	37,000	Government	Even
Transportation/Warehousing	23,000	Retail	Even

## Year-Over-Year Comparison



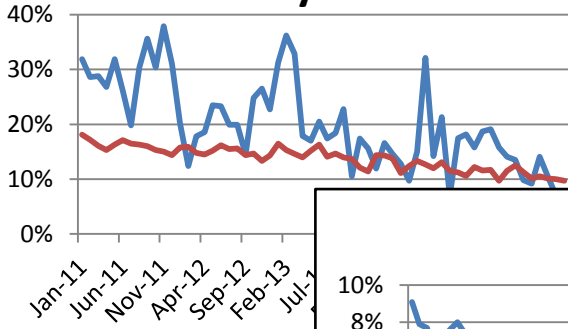
## Veterans vs Non-Veterans



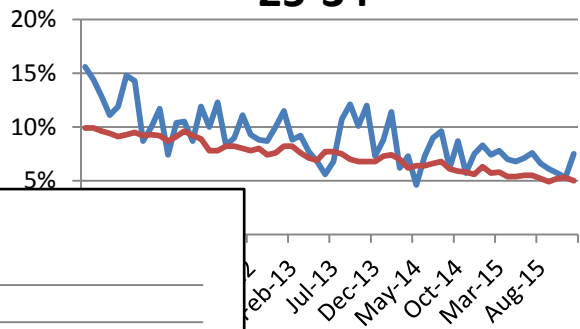
Vets / Non-Vets

Vets / Non-Vets

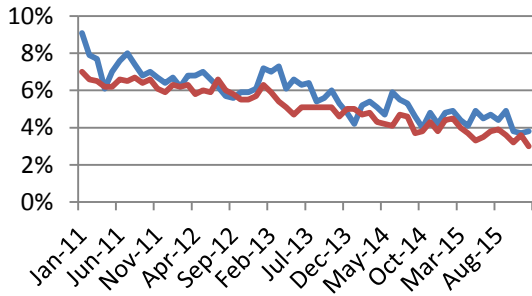
### 18-24 yrs old



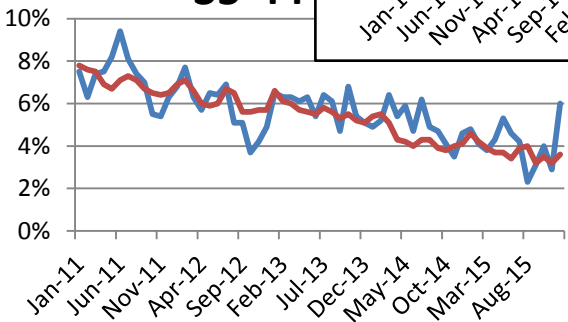
### 25-34



### 55+



### 35-44



### 45-54

