



## Employment Facts and Statistics

Office of Economic Opportunity  
 Veterans Benefits Administration  
 BLS Figures (non-seasonally adjusted)

### 1st Quarter 2016

#### Unemployment

Cohort (% of total)	Rate	Change	Level	Change	Non-Vets
<b>All Veterans (100%)</b>	<b>4.4%</b>	<b>0.3%</b>	<b>471,000</b>	<b>29,000</b>	<b>5.1%</b>
Male	4.4%	0.3%	412,000	23,000	5.4%
Female	4.7%	0.4%	59,000	6,000	4.8%
<b>Post-9/11 Veterans (36%)</b>	<b>5.6%</b>	<b>0.7%</b>	<b>172,000</b>	<b>23,000</b>	-
Male	5.5%	1.0%	143,000	27,000	-
Female	5.7%	-0.7%	28,000	-5,000	-
<b>18-24 Veterans (5%)</b>	<b>10.6%</b>	<b>2.8%</b>	<b>22,000</b>	<b>7,000</b>	<b>9.9%</b>
Male	10.0%	2.6%	16,000	4,000	11.0%
Female*	12.8%	3.1%	6,000	3,000	8.7%
<b>25-34 Veterans (20%)</b>	<b>6.7%</b>	<b>0.5%</b>	<b>96,000</b>	<b>5,000</b>	<b>5.4%</b>
Male	7.5%	1.0%	90,000	10,000	5.5%
Female	2.7%	-1.8%	6,000	-5,000	5.2%
<b>35-44 Veterans (15%)</b>	<b>3.5%</b>	<b>-0.8%</b>	<b>70,000</b>	<b>-17,000</b>	<b>4.2%</b>
Male	3.3%	-0.8%	55,000	-15,000	4.2%
Female	4.7%	-0.4%	15,000	-2,000	4.3%
<b>45-54 Veterans (21%)</b>	<b>3.6%</b>	<b>0.4%</b>	<b>99,000</b>	<b>13,000</b>	<b>3.9%</b>
Male	3.5%	0.4%	85,000	12,000	3.9%
Female	3.9%	0.0%	13,000	0	3.8%
<b>55+ Veterans (39%)</b>	<b>4.3%</b>	<b>0.6%</b>	<b>184,000</b>	<b>21,000</b>	<b>4.0%</b>
Male	4.2%	0.4%	166,000	12,000	4.4%
Female	5.8%	2.8%	18,000	8,000	3.6%

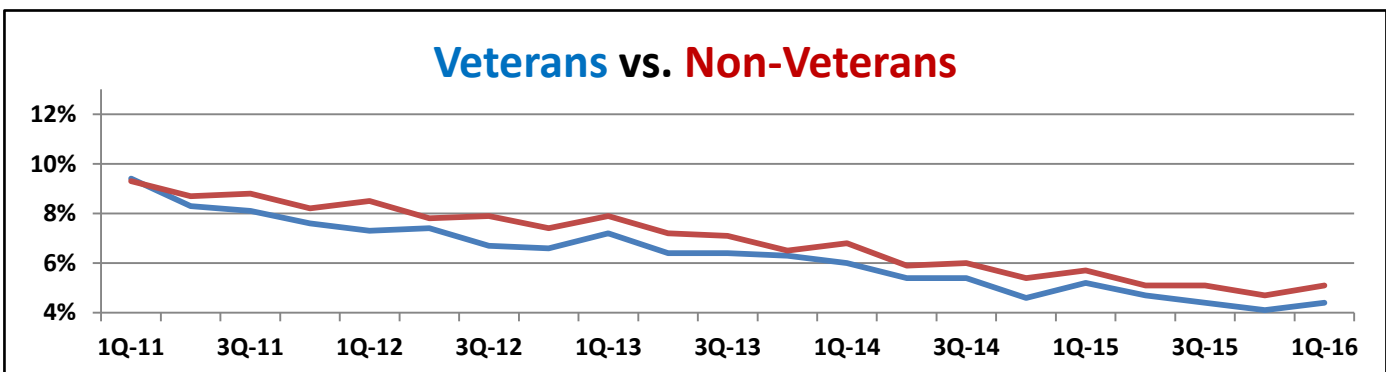
\* Does not meet BLS publication criteria

- 32,000 (11%) of all 18-54 Veterans (287,000) are enrolled in school either part time or full time

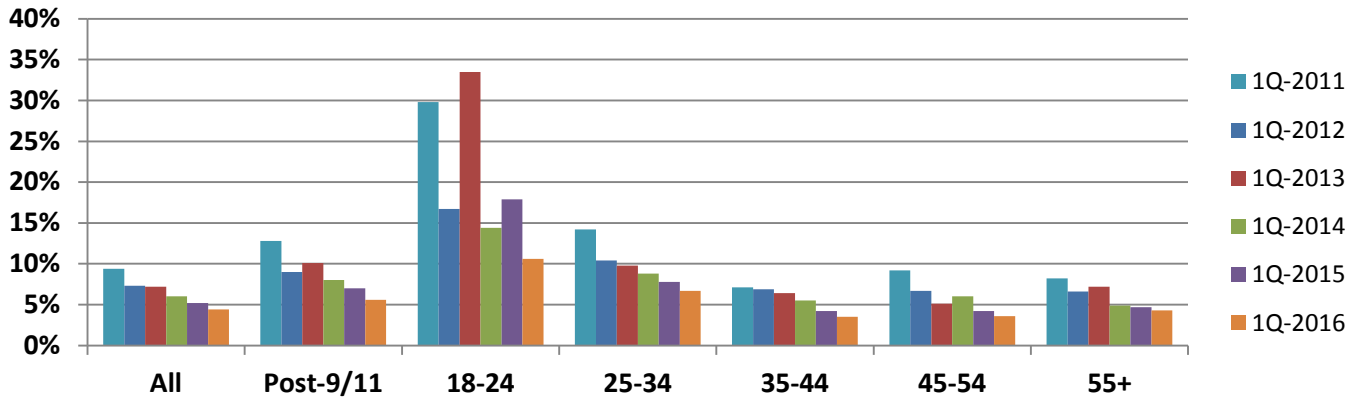
#### Unemployment by State

Highest Levels (35% of total)	Level	Highest Rates	Rate
California	41,000	Washington, DC	*10.6%
Illinois	37,000	Illinois	10.4%
Florida	35,000	Minnesota	9.6%
Texas	30,000	North Dakota	8.1%
Ohio	21,000	Mississippi	7.7%

\* Does not meet BLS publication criteria



# Year-Over-Year Comparison Veteran Unemployment

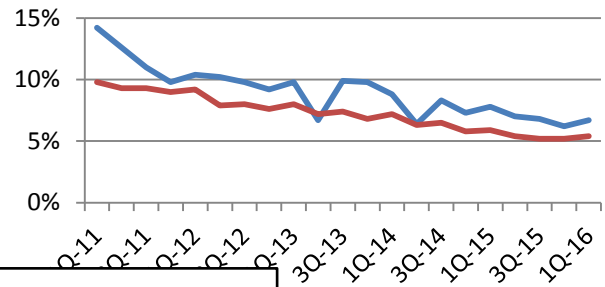
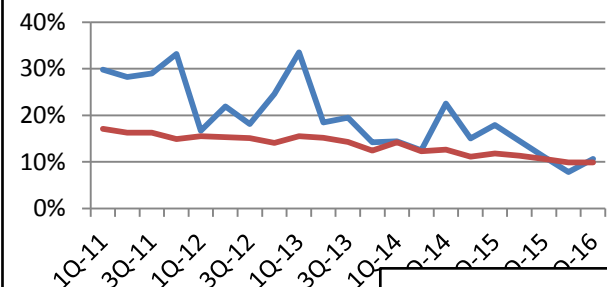


Vets/Non-Vets

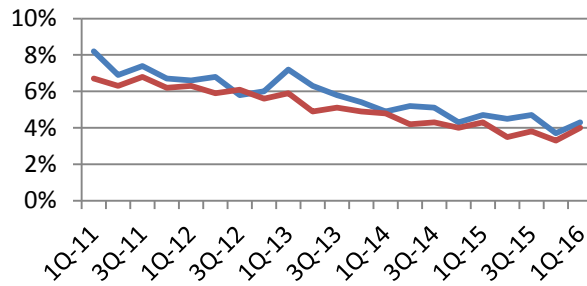
Vets/Non-Vets

## 18-24 yrs old

## 25-34



## 55+



## 35-44

## 45-54

