



Employment Facts and Statistics

Office of Economic Opportunity
 Veterans Benefits Administration
 BLS Figures (non-seasonally adjusted)

June-17

Unemployment

Cohort (% of total)	Rate	Change	Level	Change	Non-Vets
National	4.4%	0.1%	7.0M	100,000	-
>27 Weeks			1.7M	-	-
All Veterans (100%)	3.7%	0.3%	378,000	38,000	4.3%
Male	3.4%	0.1%	307,000	13,000	4.2%
Female	6.1%	2.2%	71,000	26,000	4.4%
Post-9/11 Veterans (46%)	5.1%	0.5%	172,000	21,000	-
Male	4.5%	-0.3%	129,000	-3,000	-
Female	8.5%	5.0%	43,000	24,000	-
18-24 Veterans (5%)	8.6%	-2.1%	17,000	-7,000	9.5%
Male	8.5%	-4.1%	14,000	-7,000	10.5%
Female*	9.3%	-	3,000	-	8.5%
25-34 Veterans (27%)	7.8%	2.4%	103,000	31,000	4.2%
Male	7.3%	1.9%	83,000	22,000	4.1%
Female	10.3%	4.5%	20,000	9,000	4.4%
35-44 Veterans (15%)	2.9%	0.0%	56,000	0	3.2%
Male	2.7%	-0.4%	45,000	-4,000	2.9%
Female	3.6%	1.5%	11,000	5,000	3.6%
45-54 Veterans (23%)	3.3%	0.6%	88,000	18,000	3.4%
Male	2.6%	0.0%	60,000	1,000	3.1%
Female	7.8%	4.7%	28,000	17,000	3.8%
55+ Veterans (30%)	2.8%	-0.2%	114,000	-3,000	3.1%
Male	2.8%	0.0%	106,000	3,000	2.8%
Female	3.0%	-2.5%	8,000	-6,000	3.4%

* Does not meet BLS publication criteria

- 16,000 (6%) of all 18-54 Veterans (264,000) are enrolled in school either part time or full time

Unemployed by State Data

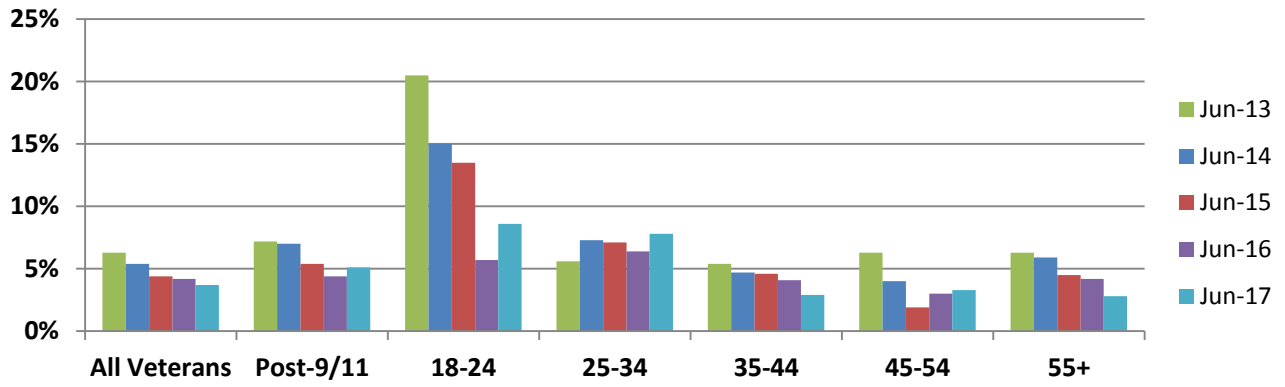
Highest Levels (43% of total)	Level	Highest Rates	Rate
California	64,000	Rhode Island	16.2%
Texas	40,000	Arkansas	7.6%
Georgia	21,000	California	6.9%
Florida	20,000	Colorado	6.2%
Tennessee	17,000	Minnesota / Tennessee	6.0%

* Does not meet BLS publication criteria

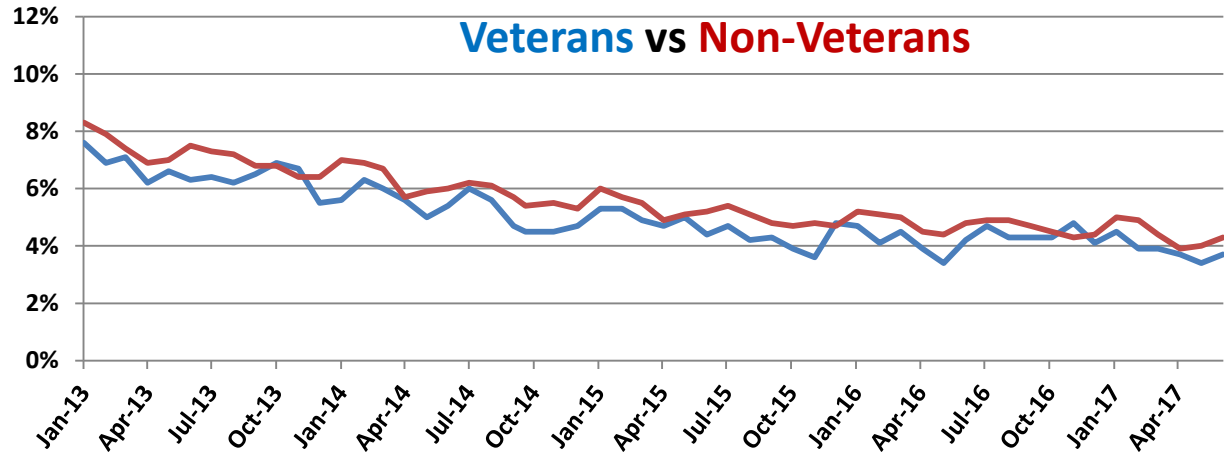
Employment Sectors

Sector	+/-	Sector	+/-
Healthcare	37,000	Manufacturing	Even
Professional/Business	35,000	Construction	Even
Leisure & Hospitality	29,000	Wholesale Trade	Even
Financial	17,000	Government	Even
Transportation/Warehousing	Even	Retail	Even

Year-Over-Year Comparison



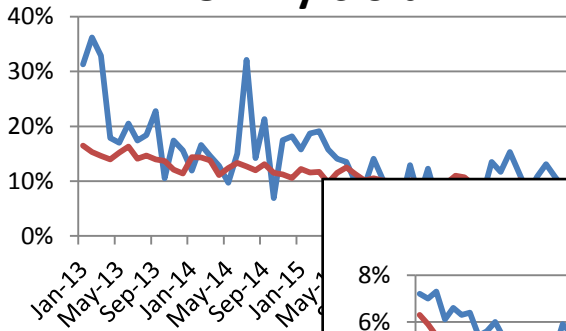
Veterans vs Non-Veterans



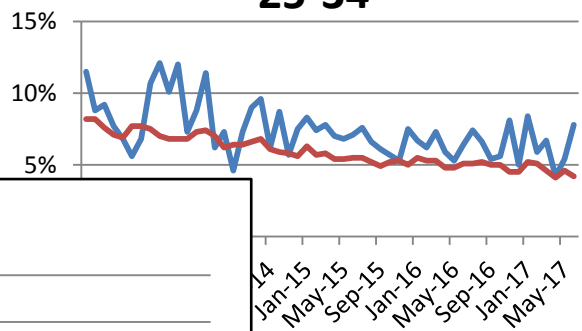
Vets / Non-Vets

Vets / Non-Vets

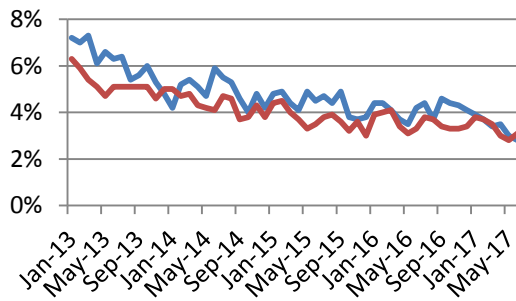
18-24 yrs old



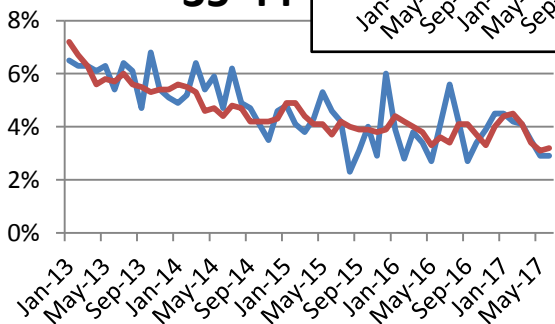
25-34



55+



35-44



45-54

